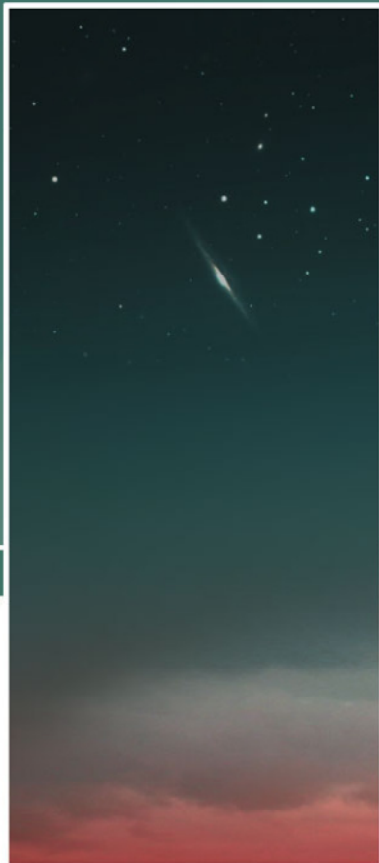


# STAREA SOLIDĂ A CORPURILOR



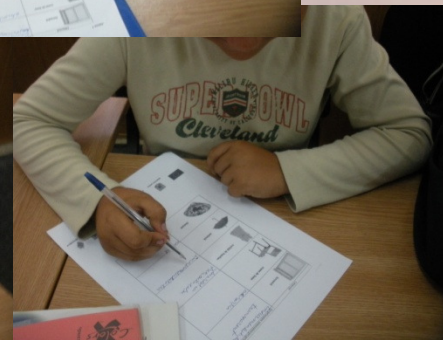
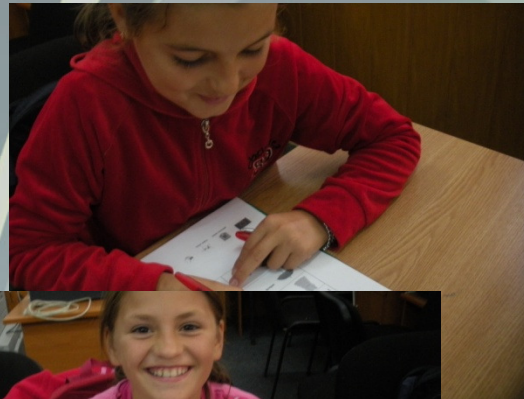
CLASA A III-A

PROFESOR ÎNVĂȚĂMÂNT PRIMAR DORINA MARIN  
ȘCOALA "DIMITRIE ANGHEL" CORNEȘTI-  
MIROSLAVA-IAȘI

The image is a composite graphic. The top half shows a dark night sky with several stars and a bright comet streaking across the left side. A large, multi-layered rainbow arches across the center, with colors transitioning from yellow at the top to green and blue at the bottom. A horizontal white banner with a thin red border is positioned across the middle, containing the title text. The bottom half of the image depicts a landscape at sunset or sunrise, with a vibrant red and orange sky. A rainbow is visible on the right side, mirroring the one in the top half. The foreground shows dark, silhouetted terrain with some reflective patches.

# PROPRIETĂȚILE MATERIALELOR

# DEFINIREA PROPRIETĂȚILOR

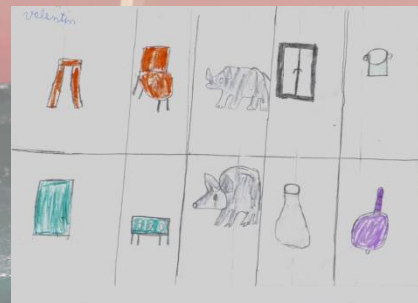
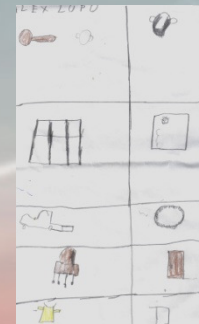
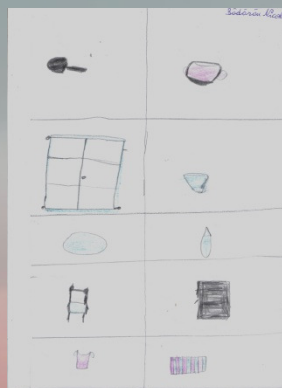
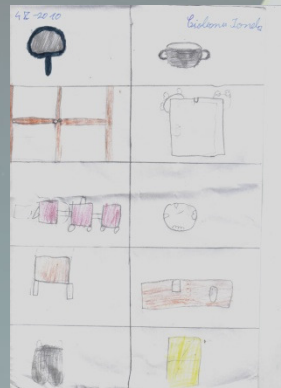
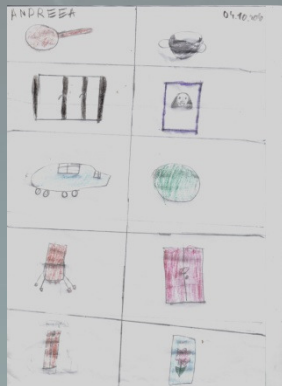


•ACTIVITATEA A AJUTAT LA ÎMBOGĂȚIREA VOCABULARULUI ȘI LA ASOCIEREA PROPRIETĂȚII CU CORPURILE DIN MEDIUL ÎNCONJURĂTOR

# FIȘE DE LUCRU

ELEVII:

- AU EVIDENȚIAT PROPRIETĂȚILE MATERIALELOR
- AU REDAT PRIN DESEN CORPURI DIN MATERIALE DIVERSE ȘI AU SPECIFICAT UTILIZARILE ACESTORA





**Alege răspunsul corect!**

# CONCURS PE ECHIPE



- ELEVII AU SELECTAT RĂSPUNSUL CORECT, ÎNTR-O ÎNTRECERE PE ECHIPE
- EHPA BĂIEȚILOR A FOST CÂȘTIGĂTOARE, LA DIFERENȚĂ DE 1 PUNCT DE CEA A FETELOR