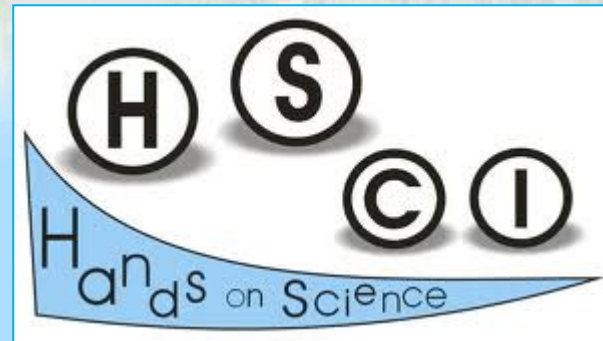




# S.O.S. PROJESİ



# PROJE ÖN ÇALIŞMALARI



## Mogan Gölü Su Kuşları Gözlemi – Ocak 2003



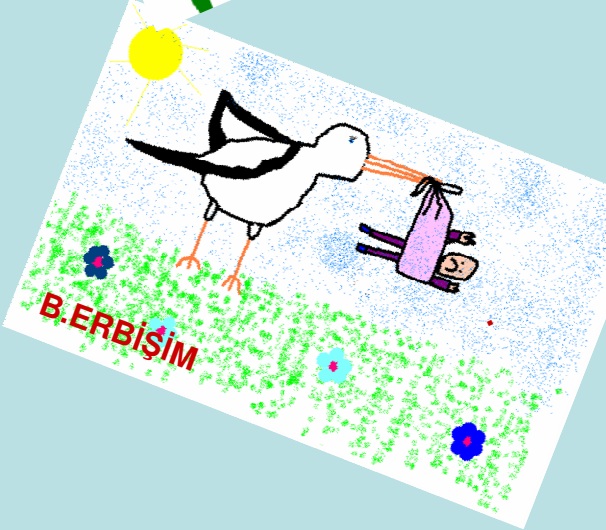
# PROJE ÖN ÇALIŞMALARI

Bolu-Yeniçağa Gölü Kuş Gözlemi – Ekim 2003



# PROJE ÖN ÇALIŞMALARI

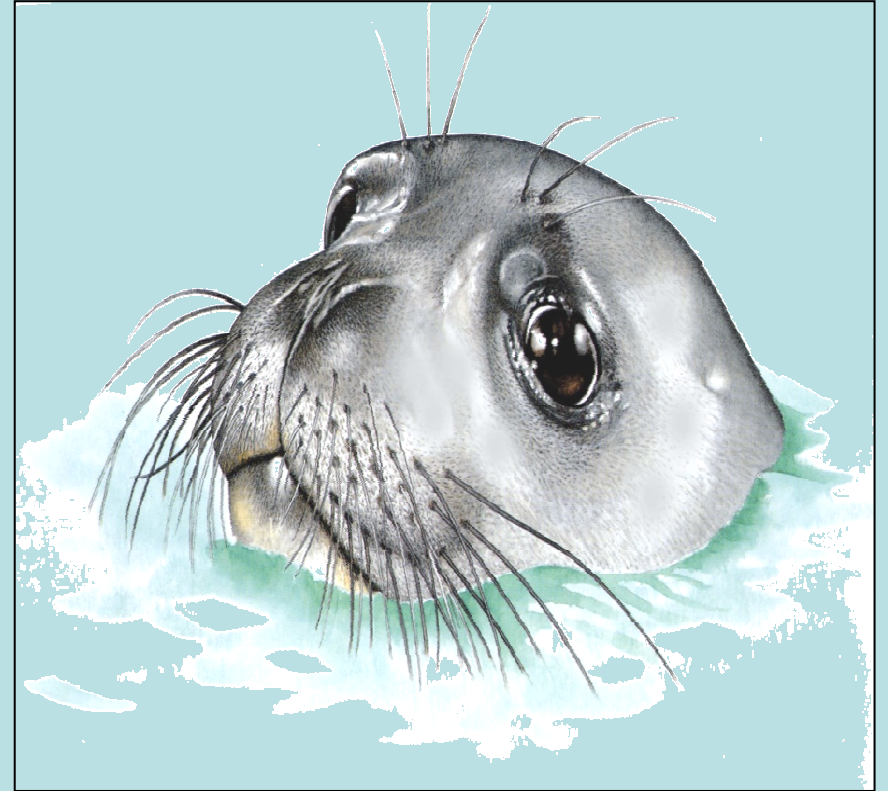
Soyu Tehdit Altında Olan Kuşlarımız



# PROJE ÖN ÇALIŞMALARI



Akdeniz Fokunu Koruyalım - 2004



# AKDENİZ FOKU



Monachus monachus



# TÜRKİYE DENİZLERİNDE SOYU TEHDİT ALTINDA OLAN SU CANLILARI





Sevgi Çiçeđi

*Centaurea tchihatcheffii*



# PROJE ÖN ÇALIŞMALARI

Anadolu'nun Endemik Bitkileri - 2005



# S.O.S PROJESİ 2005-2006



## PİLOT UYGULAMA

...Üç ülkeden 50 ilköğretim öğrencisi

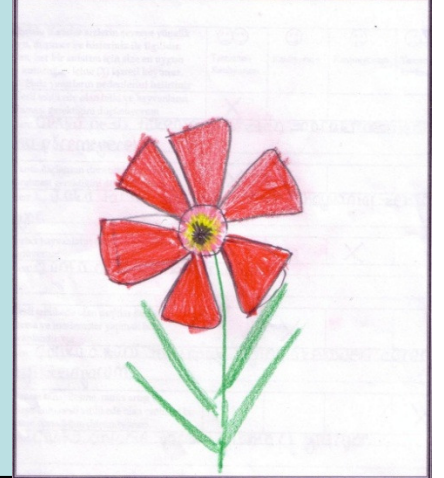
...Gönüllü çalışma

### Örneklem

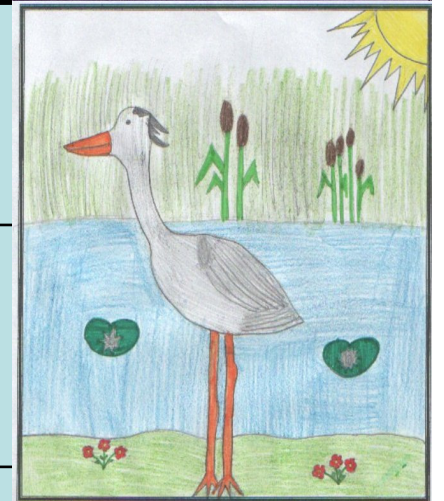
Ülke/Cinsiyet	Kız öğrenci	Erkek öğrenci	Toplam
Türkiye	10	11	21
Amerika	7	-	7
Romanya	11	11	22
Toplam	28	22	50

# ÇALIŞILAN TURLER ve ALANLAR

2005 - 2006



	Nesli tehlike altında olan canlı	Tehdit altındaki alan
<b>Türkiye</b>	<i>Centaurea Tchiatcheffii</i>	Mogan Gölü
<b>Romanya</b>	<i>Ardea cinerea</i>	Tur Vadisi, Satu Mare
<b>Amerika</b>	<i>Danaus plexippus</i>	RPCS Okul ormanı



# S.O.S PROJESİ 2006-2007



# Dört Ülke Dört Okul



...Dört ülkeden 89 ilköğretim öğrencisi

...Gönüllü çalışma

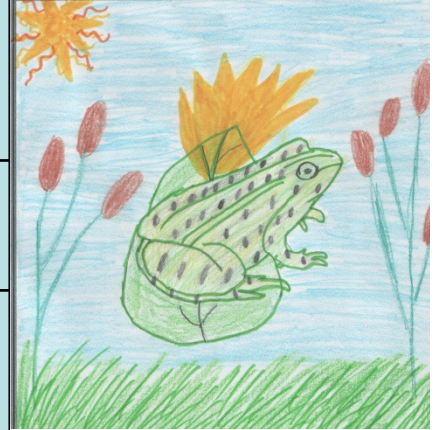
## Örnekleme

Ülke/Cinsiyet	Kız öğrenci	Erkek öğrenci	Toplam
<b>Türkiye</b>	10	6	16
<b>Amerika</b>	11	-	11
<b>Romanya</b>	11	11	22
<b>Bulgaristan</b>	15	25	40
<b>Toplam</b>	47	42	89

# ÇALIŞILAN TURLER ve ALANLAR

2006 - 2007

	Nesli tehlike altında olan canlı	Tehdit altındaki alan
<b>Türkiye</b>	<i>Oxyura leucocephela</i>	Eymir Gölü
<b>Romanya</b>	<i>Rana lessonae</i>	Odoreu
<b>Bulgaristan</b>	<i>Phalacrocorax carbo</i>	Burgaz Gölü
<b>Amerika</b>	<i>Danaus plexippus</i>	RPCS Okul ormanı



# S.O.S PROJESİ 2007-2008



...Üç ülkeden 49 ilköğretim öğrencisi

...Gönüllü çalışma

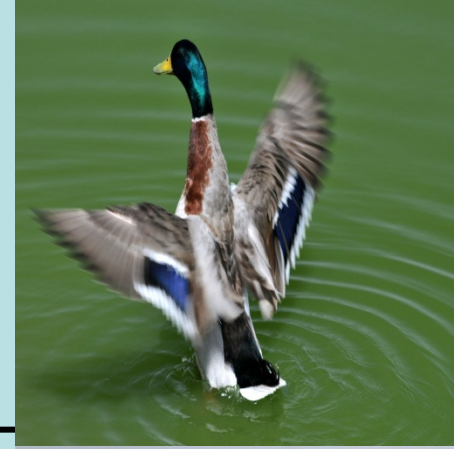
## Örneklem

Ülke/Cinsiyet	Kız öğrenci	Erkek öğrenci	Toplam
<b>Türkiye</b>	10	6	16
<b>Amerika</b>	11	-	11
<b>Romanya</b>	11	11	22
<b>Toplam</b>	32	17	49

# ÇALIŞILAN TURLER ve ALANLAR


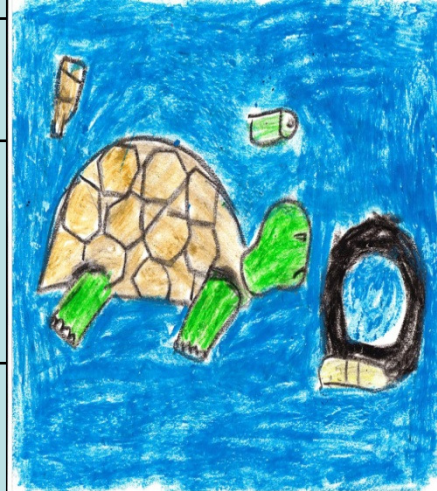

2007 - 2008

	Nesli tehlike altında olan canlı	Tehdit altındaki alan
<b>Türkiye</b>	Crocus ancyrensis Daphnea Anas platyrhynchos Mallard	Yenihisar Göleti
<b>Romanya</b>	Iris pseudocorus	Carei Ovası
<b>Amerika</b>	Danaus plexippus Asclepias tuberosa Asclepias syriaca Asclepias incarnata	RPCS Okul ormanı







Turkey Coordinator country  2009-2010	Göktürk Primary School	Ankara <i>Beynam Forests</i>	Imperial Eagle <i>Aquila heliaca</i>	
	Kavaklıdere Primary School	Ankara Atatürk Forest Farm	Angora Rabbit <i>Oryctolagus cuniculus</i>	
	Şehit Öğretmen Nuriye Ak Primary School	Diyarbakır <i>Dicle-Fırat Rivershed</i>	Fırat Turtle <i>Rafetus euphraticus</i>	
	Uzunmustafa Primary School	Düzce <i>Efteni Lake</i>	Caucasian Festoon <i>Zerynthia caucasica</i>	
	Orhaniye İnci Narin Yerlici Pimary School	Marmaris <i>Çetibeli Sığla Forest</i>	Anatolian Sweetgum Tree <i>Liquidambar orientalis</i>	
	Private Ekin College	<i>Seyrek Menemen Gediz Delta</i>	White Stork <i>Ciconia ciconia</i>	
USA	Baltimore Roland Park Country School	Maryland Cheseapeake Bay	Monarch Butterfly <i>Danaus plexippus</i>	
Romania	School Number 5 Satu Mare	Satu Mare River Tur Valley	Noctule Bat <i>Nyctalus noctula</i>	
India	Panchayat Union School	<i>Cuddalore Kundiyamallur Lake</i>	Not being informed	

# PROJE SÜREÇLERİ ve ADIMLARI



Dört süreç ve 22 adım...

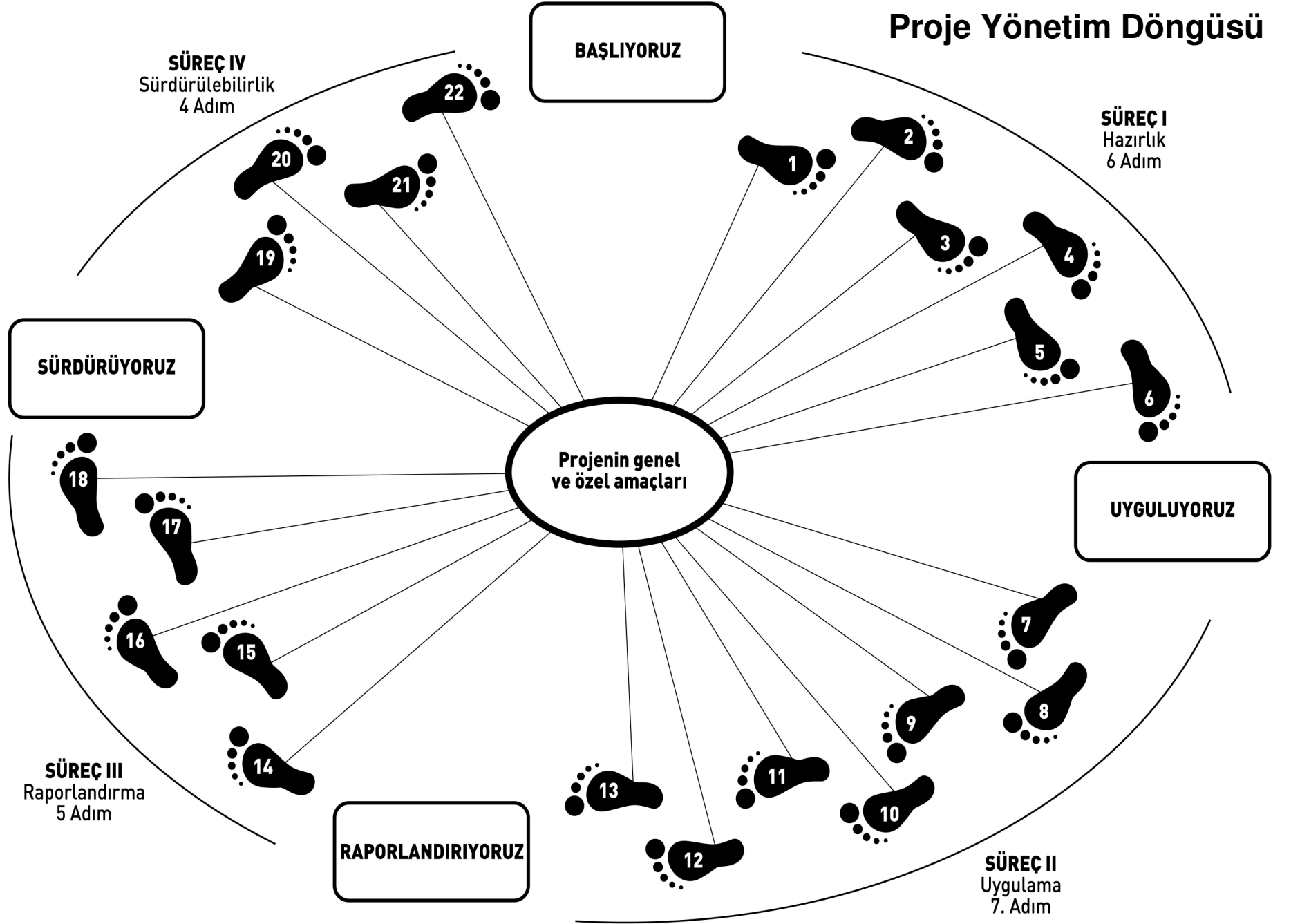
Süreç 1. Hazırlık ( 6 Adım )

Süreç 2. Uygulama ( 7 Adım )

Süreç 3. Raporlandırma ( 5 Adım )

Süreç 4. Sürdürülebilirlik ( 5 Adım )

# Proje Yönetim Döngüsü



# KONTROLLÜ DENEYLER



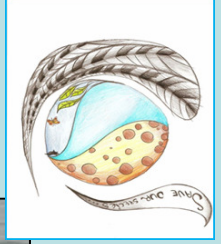
# KONTROLLÜ DENEYLER



# ALAN ÇALIŞMALARI

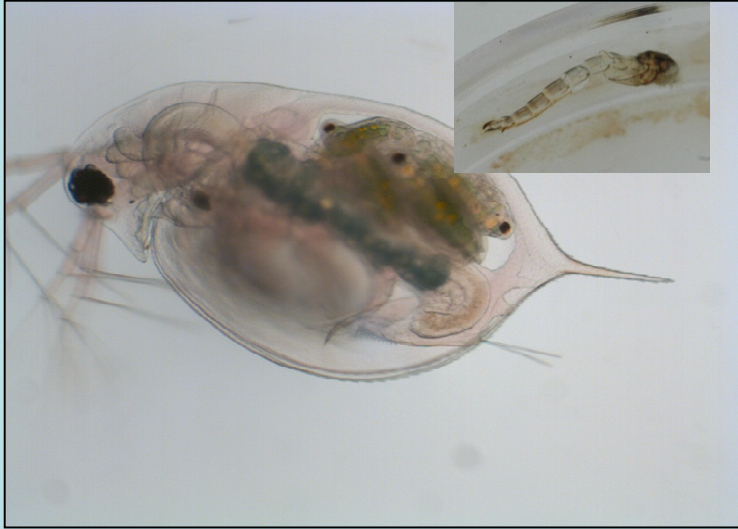


# ALAN ÇALIŞMALARI





# ALAN ÇALIŞMALARI

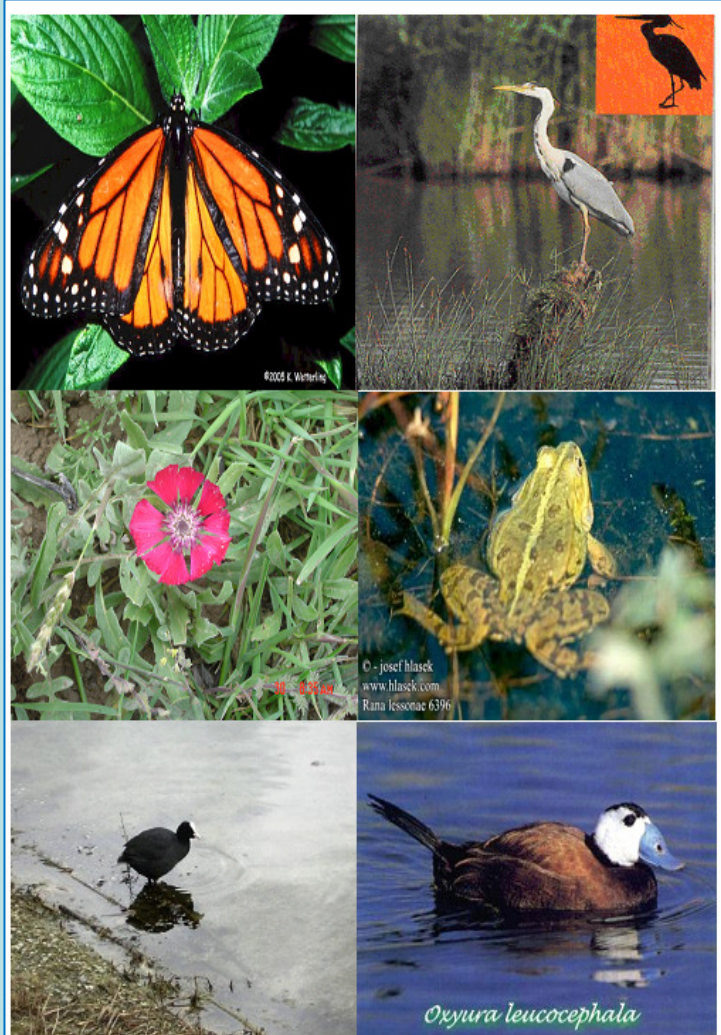


# ALAN ÇALIŞMALARI



# PROJE ÜRÜNLERİ

## ÖĞRENCİ RESİMLERİ



# PROJE ÜRÜNLERİ

## POSTERLER



# PROJE ÜRÜNLERİ

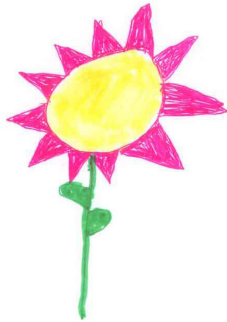
## ÖĞRENCİ MEKTUPLARI



### USA

Hi! my name is Kayla. I go to Roland Park Country School. I am 13 years old. In my family, I have two brothers and a sister. I have a strong passion for animals and I have 4 pets of my own. I really enjoy studying animals and other things in our natural world. I really look forward to working with you all.

Your Friend,  
Kayla Alecuianatos



### ROMANYA

EVELIN KOOB

Pictures of Grey Stork

Please draw a picture of Grey Stork, you are studying in this project, below provided area. At the end of the picture, write the main characteristics of this endangered species.



Main characteristics of Grey Stork:

It lives in Central Europe. It lives near rivers and swamps. It flies with its neck in the shape of letter S. It eats fish, insects, snakes, mice. It builds its nest at 2-3 m high in trees. It is 22 cm tall. Its wings are 190 cm wide. It weighs between 15-2 kgs.

# PROJE ÜRÜNLERİ



## ÖĞRENCİ SUNUMLARI ve BELGESELLERİ

**UNIQUE & UNIVERSAL**

Berk Uslu  
Arelya Karasoy  
METU SCHOOLS



# PROJE ÜRÜNLERİ

## OKUL PANOLARI

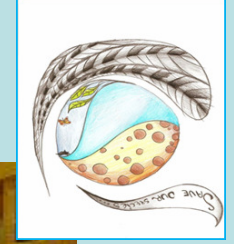


TÜRKİYE



ROMANYA

# PROJE ÜRÜNLERİ

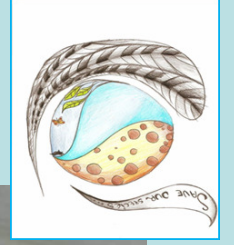


## ASİT DEDEKTİFLERİ





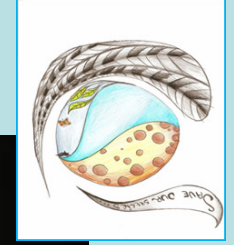
# PROJE ÜRÜNLERİ



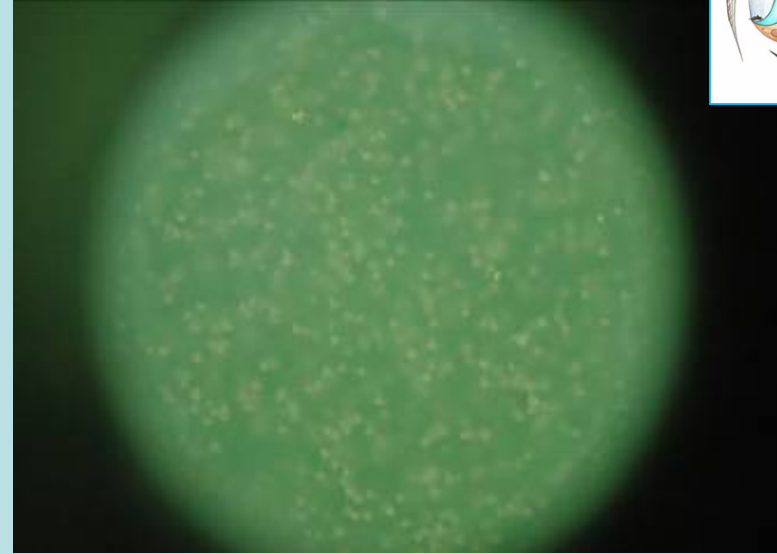
## SU ALTI GÖZLEMCİSİ



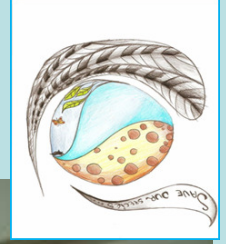
# PROJE ÜRÜNLERİ



## SU DÜRBÜNÜ



# PROJE ÜRÜNLERİ



## AĞ KEPÇE ve SU ÖRNEK ŞİŞESİ





HSCI KONFERANSI Hindistan 2009

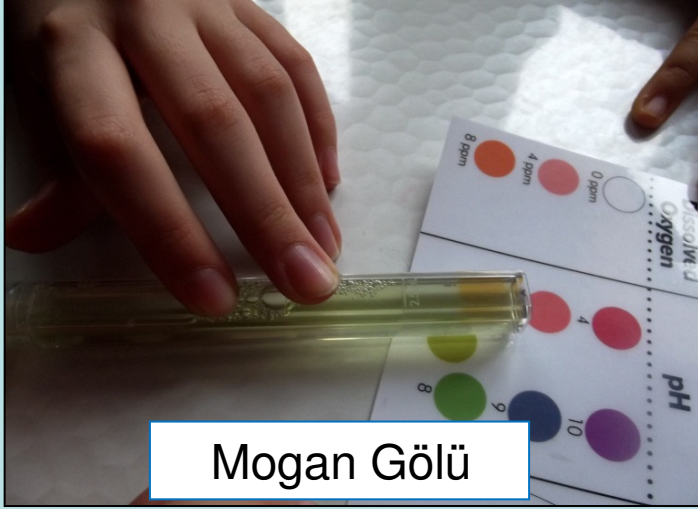
# Ve...S.O.S. PROJESİ 2011-2012



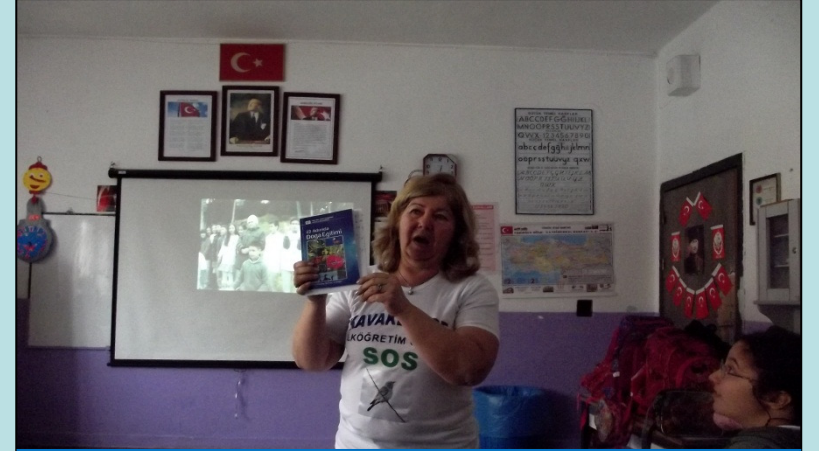
Türkiye'den 29 Okul

A.B.D' den 1 Okul

# ANKARA



## KAVAKLIDERE İLKÖĞRETİM



Küçük Kerkenez



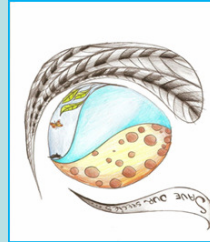
Mogan Gölü

# ANKARA



Pasbaş Patka

# YENİTURAN İLKÖĞRETİM





# ANTALYA

Yalı apkını

Yamansaz Gölü



## 80. YIL CUMHURİYET İLKÖĞRETİM





# ANTALYA



Nilüfer



Kırgöz Gölü

## MELAHAT FARAÇLAR İLKÖĞRETİM



ANTALYA



MERYEM MUSTAFA EGE İLKÖĞRETİM

ERROR: undefined  
OFFENDING COMMAND: '~

STACK: